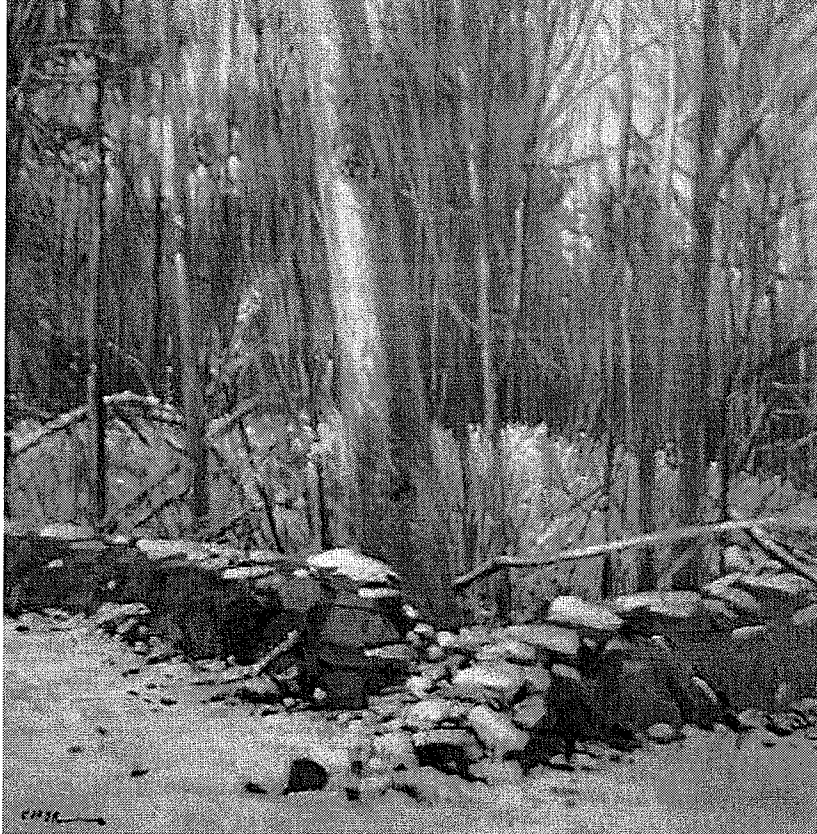


# WINDHAM REGIONAL PLAN



“Sticks & Stones”

Oil on canvas by Jerry Caron

**Adopted October 24, 2006**

Windham Regional Commission  
139 Main Street, Suite 505  
Brattleboro, VT 05301  
(802) 257-4547

management and co-generation, expanding the role of distributed generation and net metering, and encouraging the consideration of biomass generation. Identifying local power needs and the use of unconventional methods of energy production and conservation – with a focus on renewable energy sources and localized generation – includes analyzing the electric grid to identify high use areas and potential power sources close to the point of use. Additionally, proposals or opportunities to bring natural gas supplies into the region may come up during the life of this plan; if so, the WRC will need to become actively involved in those efforts and reviews. The general public may have a better understanding of energy issues than in the past, and thus may be more receptive to state and local policies that would lead to a stronger and more strategic state long-range energy plan, increased diversity of electric energy supplies, greater use of innovative and creative programs such as group net metering and distributed generation, and increased conservation at all levels.

#### 4.6 ENERGY POLICIES

1. Provide educational information regarding energy efficiency services and strategies, including education of homeowners and contractors regarding high standards of insulation for new buildings and the improving the energy efficiency of existing structures.
2. Provide educational information regarding the inevitable long-term consequences that would accompany significantly reduced availability or significantly increased cost of the region's energy supply.
3. Provide educational information regarding the potential environmental and economic benefits of a more diverse and more locally based energy supply.
4. With regard to all energy generation, transmission and distribution projects:
  - a. Adhere to a high environmental standard that includes avoiding negative environmental impacts to the extent possible and adequately minimizing and mitigating those that cannot be avoided;
  - b. Conduct thorough and proper studies and analyses of all anticipated socioeconomic and environmental impacts, both positive and negative;
  - c. Adequately address all areas of concern regarding proposed developments; and
  - d. Effectively and adequately address all issues related to facility operation and reliability, recognizing that in some instances they are inextricably intertwined with public health and safety concerns.
5. With regard to new or improved energy transmission or distribution facilities:
  - a. Prefer and select existing transmission and distribution corridors over creation of new corridors;
  - b. Avoid extension of energy transmission or distribution facilities into or through Resource Lands; and
  - c. Avoid extension or alteration of energy transmission or distribution facilities in any manner that would significantly impact Resource Lands or significantly diminish important natural resource values.
6. Avoid extension of energy transmission or distribution facilities, or other utility services into or through Resource Lands, or near them in a manner that significantly reduces their resource value.
7. Reduce electric energy costs with cost-effective energy efficiency measures, considering conservation as an energy source, by supporting programs such as Efficiency Vermont.